

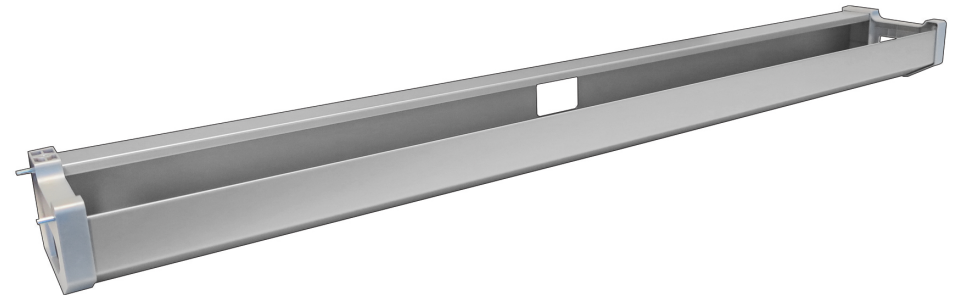


Cable Management Tray
By MultiTable, LLC

2255 W Desert Cove Ave Suite E
Phoenix, AZ 85029



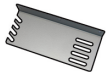
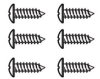
602.773.6911
customerservice@multitable.com

www.MultiTable.com



Cable Management Tray
ASSEMBLY INSTRUCTIONS

Box Contents

#	Parts	Qty	Image
01	Cable Management Tray	1	
02	Left Bracket	1	
03	Right Bracket	1	
04	Screws	6	

Required Tools (NOT INCLUDED)

05	Cordless Drill	1	
----	----------------	---	--

CAUTION

The Cable Management Tray and its components are low maintenance items, but still require regular maintenance. We recommend checking and tightening the screws every 6 months. Should your Cable Management Tray require repairs, please contact us. Any repairs or alterations should only be completed using approved replacement parts from MultiTable.

Assembly

Step 1: Insert ends of Cable Management Tray into desired slot height on both Brackets.

Step 2: Place the Cable Management Tray opposite from where you will stand, underneath the surface, with open slots of both brackets facing outwards towards the edge of the surface.

Step 3: Using the 6 provided screws, adhere the Cable Management Tray with Brackets to the underside of the surface with a cordless drill.

Finished Example:

